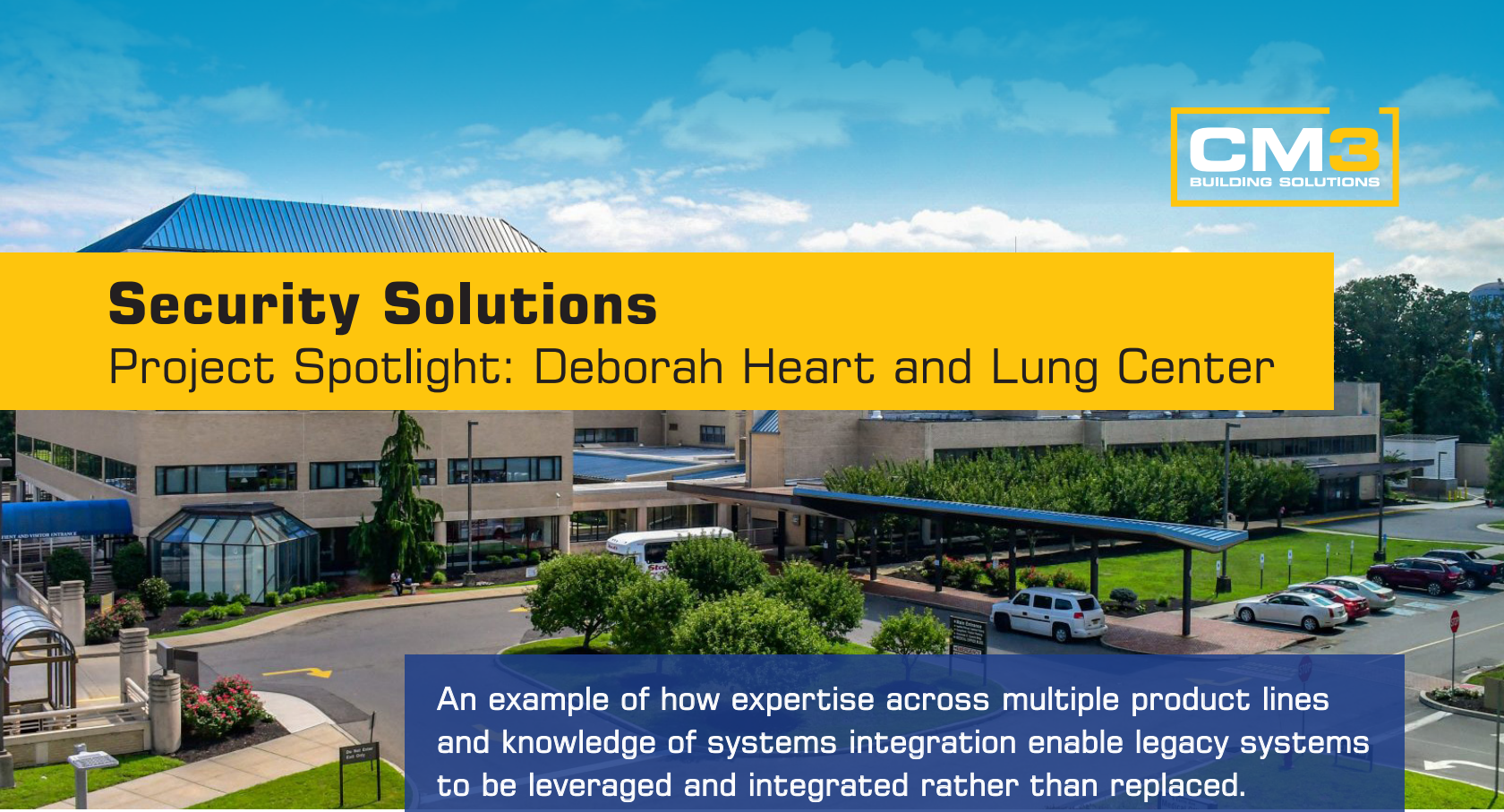


Security Solutions

Project Spotlight: Deborah Heart and Lung Center

A wide-angle photograph of the Deborah Heart and Lung Center building, a large, modern, multi-story structure with a prominent blue roof. The building is surrounded by greenery, including trees and a well-maintained lawn. A parking lot with several cars is visible in the foreground. The sky is blue with scattered white clouds.

An example of how expertise across multiple product lines and knowledge of systems integration enable legacy systems to be leveraged and integrated rather than replaced.

Background

Deborah is a renowned cardiac, lung and vascular healthcare resource center with several facilities across central and southern New Jersey.

Providing a wide spectrum of diagnostic and therapeutic services and serving as an independent teaching hospital, Deborah's vision is to lead the region as a premier provider of high quality innovative, compassionate and patient-focused heart, lung and vascular care, as a respected educator of the next generation of specialists, and as a thought leader in advanced clinical research.

Challenges

The main facility, located in Browns Mills, New Jersey was operating with an Amag access control system installed in the late 1990's and an Exacq video management system installed in the late 2000's with cameras from ACTi, Arecont Vision, and Hikvision.

In addition to some of the cameras needing to be replaced, Deborah was also concerned about the level of service it was receiving from its current vendor. The hospital asked CM3 to assess the system, identify a reasonable upgrade path while utilizing as much of the system as possible, and provide maintenance on the existing system.

Additionally, the center had a FEMA grant which would enable them to enhance their security, primarily by adding video surveillance to the exterior of the complex.

Solutions

CM3 worked with the Deborah Security Department to delineate the new areas for video surveillance. Additionally, CM3 conducted an extensive equipment and site assessment to determine repairs, replacements and upgrades.

The CM3 Sales and Engineering Team determined that much of the Amag access control, Exacq video management systems and ACTi and Arecont Vision cameras were still usable. The Hikvision cameras should be replaced with Hanwha cameras which would enhance security affordably and be easily integrated into the existing security system.

A significant advantage for CM3 was its ability to utilize the existing systems to the fullest extent possible, rather than approaching the project with a 'rip and replace' mentality.

Results

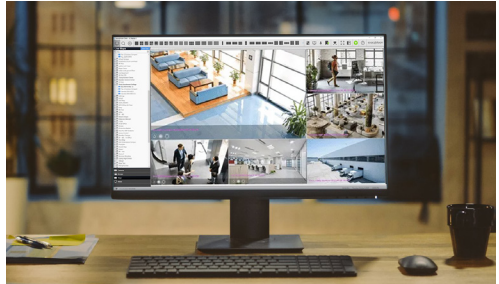
During the process of designing the additional system components, the Deborah IT Department requested that all cameras be moved off the corporate network and onto a proprietary network due to bandwidth concerns.

CM3 designed a new network leveraging the existing dark fiber backbone already installed at the hospital.

Hanwha cameras were installed to replace the existing Hikvision cameras, thereby providing enhanced security through multi-sensor, dome, and bullet cameras.

Additional project phases included installation of access control and video surveillance in the new surgery center and additional access control and video surveillance in the new three-story vertical addition to the existing hospital space.

As a systems integrator for several access control and video surveillance product lines, CM3 was uniquely positioned to assess the existing systems and expand upon them.



Solutions Deployed:

- » Amag Access Control
- » Exacq Video Management System
- » Hanwha Cameras: Multi-Sensor, Dome, Bullet
- » Fiber Optic Network

Hanwha Cameras Provided Enhanced Security



Dome cameras:

Useful for both indoor and outdoor settings. A vandal-proof dome encasing, IR for night vision, and sturdy metal base make it ideal for rugged conditions.



Multi-sensor cameras:

Panoramic viewing, higher pixel density and excellent image quality. Their single installation point, single network cable and single software license make them highly affordable.



Bullet cameras:

Longer range makes them ideal for viewing large areas, such as parking lots. Ideal for outdoor use, the tip of the bullet camera includes a small lip which helps protect against glare and weather.