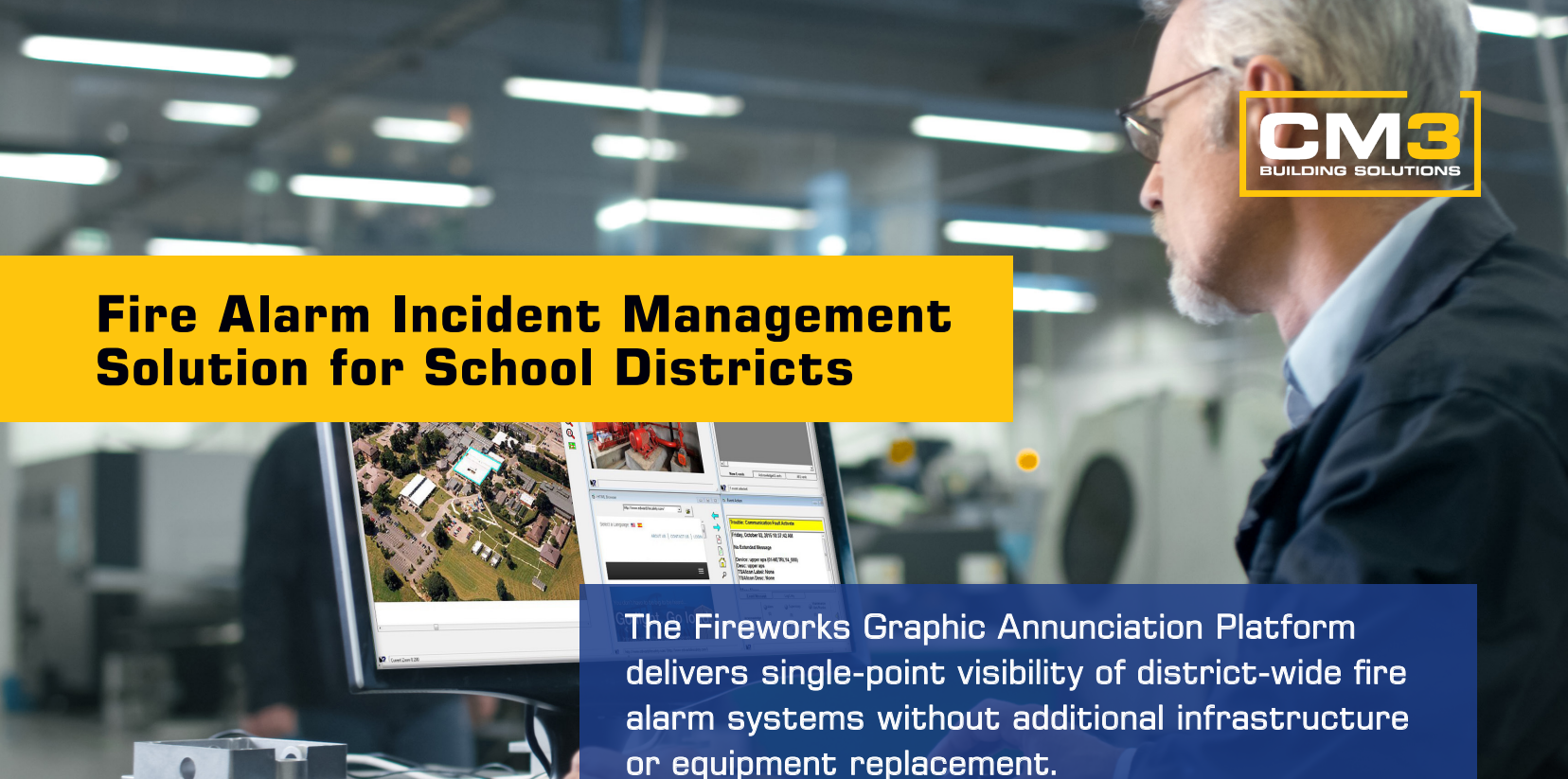


Fire Alarm Incident Management Solution for School Districts



The Fireworks Graphic Annunciation Platform delivers single-point visibility of district-wide fire alarm systems without additional infrastructure or equipment replacement.

The FireWorks Graphic Annunciation Platform is a software platform that works with any fire alarm control panel to provide end users with clear, concise, and coordinated site incident information

- » Brings disparate fire alarms and those that are not networked under one incident management platform.
- » Delivers real-time system information for fast decision making during stressful events.
- » Sends email alerts to staff.
- » Pinpoints the scene of concern with a detailed map of the building and event location.
- » Helps deploy facility resources more efficiently by reducing the need for travel to diagnose system faults.
- » Color-codes each message according to its priority which alerts the viewer instantly to any change of status or newly logged incident.
- » Provides a platform for future growth and integration.
- » Multiple workstations can be added on the same network to provide redundant operations for improved survivability.

About CM3

CM3 Building Solutions has decades of fire alarm experience. Our Professional Engineers and NICET certified personnel ensure that your system is installed and maintained to the industry's latest codes, including the 2019 National Fire Protection Association (NFPA) standards for Distributed Antennae Systems (DAS).

Standard Features

- » Graphic annunciation software provides map-based incident location.
- » Dynamic event-driven user interface delivers easy-to-follow notification.
- » Email event notification to multiple recipients for instant communication with off-site personnel.
- » Full history reports can be created and distributed, including custom incident and status reports.
- » Password-defined user access and event filtering to control who sees what.

Complete Fire Alarm System Services

- » Initial Site Survey
- » Design and engineering to local & state fire code requirements
- » Local filing/permits
- » Configuration and installation
- » Testing of installed system
- » Optional maintenance and support
- » Code-compliant test and inspect services
- » Central Station Monitoring services

FireWorks Configuration

By deploying a StarLink Communicator at each building's existing Fire Alarm Panel, the panel can communicate simultaneously to the Central Monitoring Station and the FireWorks Incident Communication Platform.

Because FireWorks is platform-agnostic, it can integrate with any fire alarm panel, regardless of manufacturer or age, although some provide higher levels of integration than others.

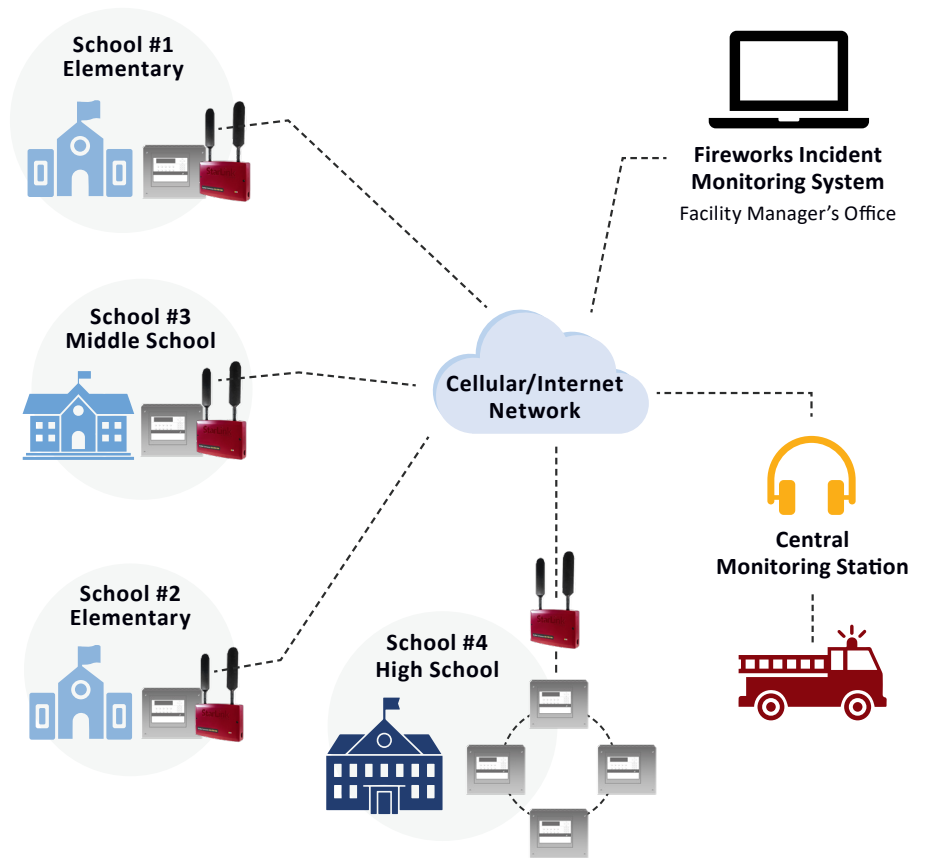
As existing fire alarm panels require replacement, the Kidde product can be utilized to deliver enhanced system monitoring and additional system integrations.

The FireWorks Platform provides:

- » Real-time incident notifications
- » Historical recording of incidents
- » Optional email notifications are available

System status is transmitted via the cellular data network and provides alarm, trouble, and supervisory statuses of the system. Incidents are logged and posted to appropriate display areas.

FireWorks does not impact the functioning of the fire alarm system, and communication to the Central Monitoring Station is not impacted by deployment of FireWorks.



FireWorks Viewports

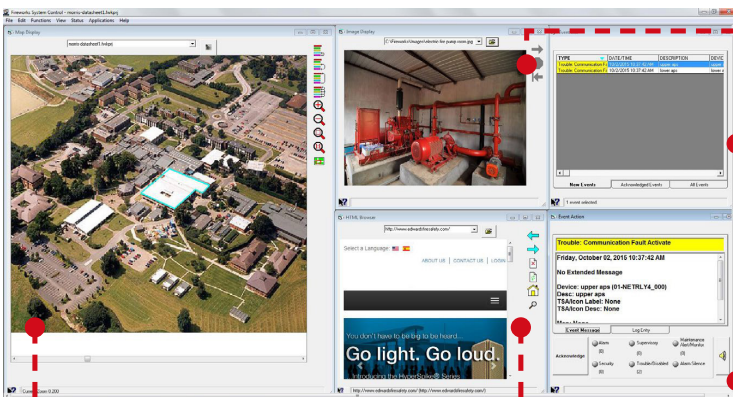


Image Viewport: Displays images relevant to the occurrence. Any event, any device, or any combination of devices and events can retrieve instant graphical information that is relevant to the occurrence and can be understood at a glance.

Event List Viewport: Upon receipt of a change of state, the event information is displayed in the Event List View-port. If several events are received, all events are displayed in the Event List viewport and are color-coded by priority.

Map Viewport: This gives the user an overview of the event's location in the context of its surroundings and the entire facility.

Browser Viewport: When the FireWorks work-station is provided with an Internet/network connection, the Browser Viewport can be configured to automatically connect to emergency information sites, network accessible building automation, video streams, and other third-party systems.

Event Action Viewport: This screen is used to provide instructions on how to respond to the selected event, and also to acknowledge that these instructions have been carried out.